

# Lumex ezDisplay Quick User Guide

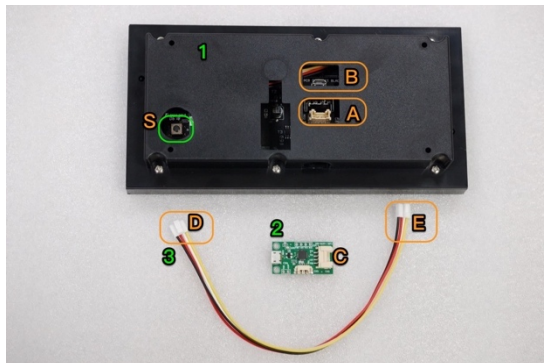
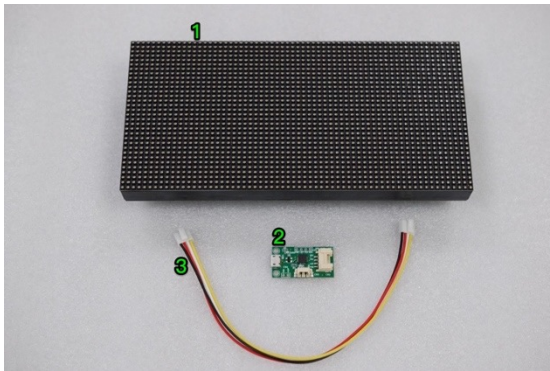
Check HTML Online version at

<https://www.lumex.com/ezDisplay-Quick-User-Guide.html> or Scan QRcode



## Items in the Box

1. **LED Display Module**
2. **USB to UART Module**
3. Cable to connect between **USB to UART module** and **LED Display Module**

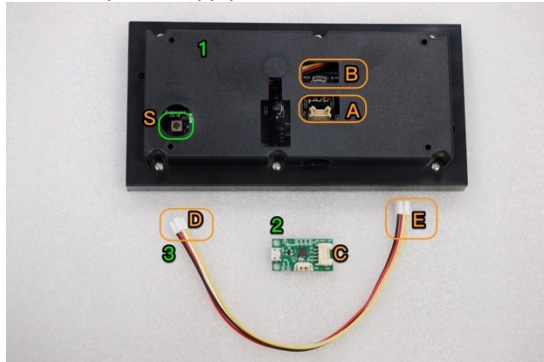


Note: additional usb(micro-B) cable is needed (not include)

Connect all items and light up –

Before making the connection, please prepare a usb micro-b cable and power supplier ready.

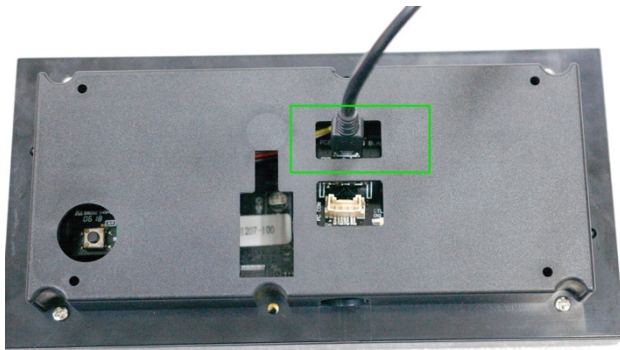
\* most usb cable for android phone is micro-B and usb charger for mobile phone could be the power supply.



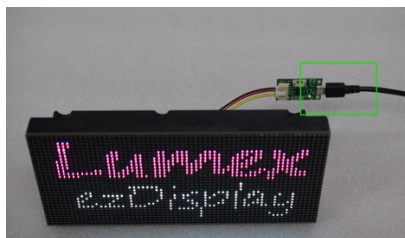
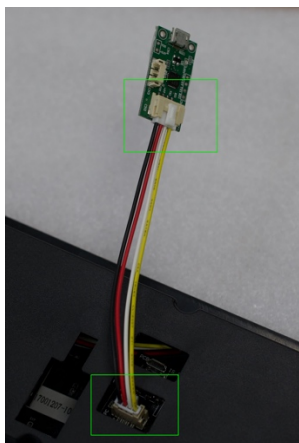
1. Bluetooth only
  - a. Bluetooth module is already plugged with LED Display Module
  - b. Simple connect a usb cable to the usb socket at position “B” – this connection is for power only.
2. With USB to UART module
  - a. “D” and “E” are the same.
  - b. Plug “D” in to “C”
  - c. Plug “E” to “A”
  - d. Connect a usb cable to the usb socket on USB to UART module(2) – this connection for power and data.

Note: bluetooth can't be used while USB to UART module is connected.

Start to use ezDisplay – Bluetooth (mobile phone)



Start to use ezDisplay – Bluetooth (desktop software)



Quick Page Switching –

A bottom is located in the back to switch stored pages.



Note: There are 7 pages stored in ezDisplay module, starting from page 0 to page 6.

Software and Command list download –

URL:

<https://www.lumex.com/ezDisplay-Dot-Matrix.html>



Scan QRCode To Download Page