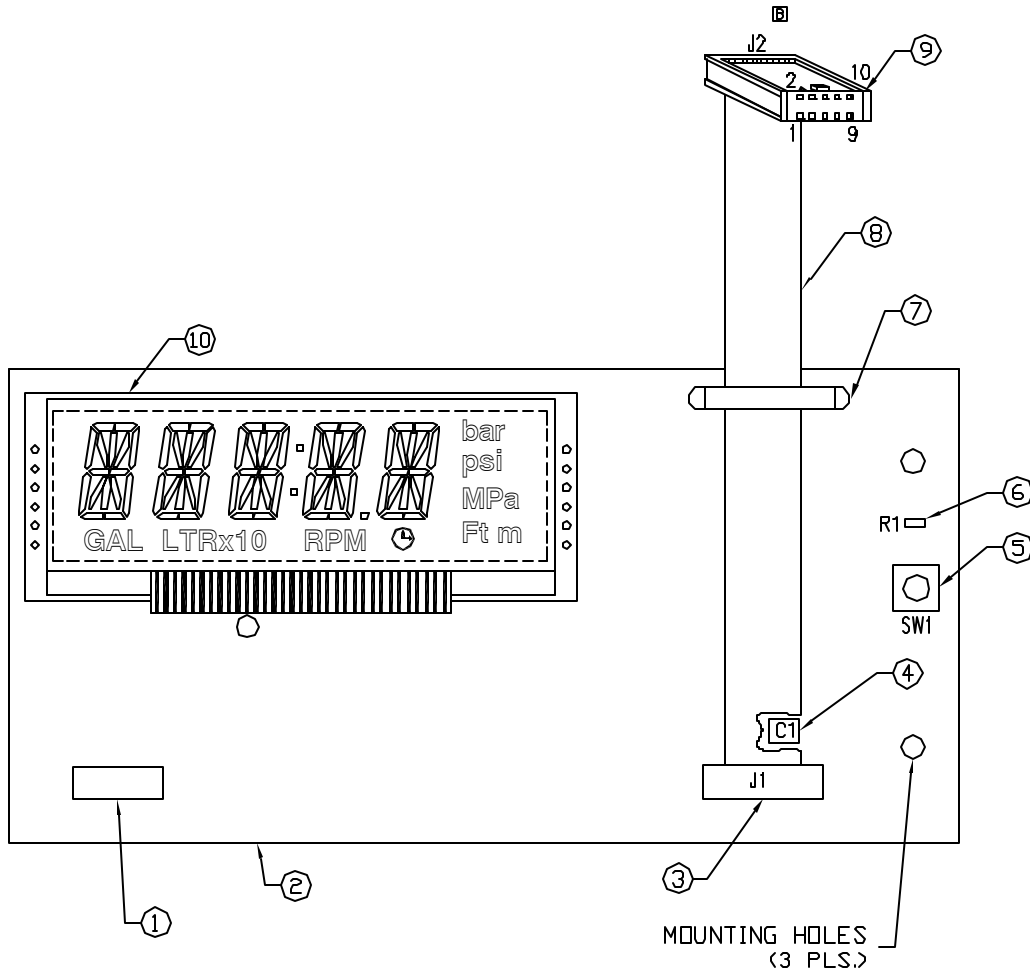


UNCONTROLLED DOCUMENT

PART NUMBER  
LCM-H501A50TR-1ASM

REV.  
D

REV.	E.C.N. NUMBER AND REVISION COMMENTS	DATE
A	E.C.N. #10803.	10.31.01
B	E.C.N. #11047.	10.27.03
C	E.C.N. #11047.	10.27.03
D	E.C.N. #11148.	4.20.07



PIN CONFIGURATION J2

PIN NO.	SYMBOL	FUNCTION
1	DATA	SERIAL DATA I/O
2	WR	WRITE CLOCK INPUT
3	CS	CHIP SELECT INPUT
4	NC	NO CONNECTION
5	SL	SENSE LINE
6	RD	READ CLOCK INPUT
7	TRQ	TIME BASE OR WDT OVERFLOW FLAG
8	VDD	+5V
9	PB	PUSH BUTTON
10	VSS	GND

NOTES:

- PERMANENTLY MARK "245207" MANUFACTURING IDENTIFICATION NUMBER ON FRONT AND DATE CODE (YEAR/WEEK) ON BOTTOM OF PCB AS SPACE ALLOWS.
- PCB MATERIAL FR4.
- MOLEX CONNECTOR 13-38-0103 OR DEQUIVALENT.
- CAPACITOR, 50V, .1uF, 20% SMT 0805 PACKAGE, Z5U.
- OMRON SWITCH, B3W1002.
- RESISTOR 10KΩ 1/10W, 1% SMT.
- PANDUIT NYLON CABLE TIE, PLC1M-S4-C 4.3", TRIM EXCESS CABLE AFTER INSTALLATION.
8. 10 CIRCUIT RIBBON CABLE, .05" JM 3365/10 OR EQUIVALENT, 8.5" LENGTH.
- MOLEX RECEPTACLE, .1" PITCH 39-51-2103 OR EQUIVALENT.
- LUMEX PART# LCM-H501A50TR-1.
- TESTING REQUIRED:
  - TRACE VERIFICATION ON BOARD PRIOR TO ASSEMBLY.
  - FUNCTIONAL TESTING OF COMPLETED ASSEMBLY.

UNCONTROLLED DOCUMENT

\*UNLESS OTHERWISE SPECIFIED TOLERANCES PER DECIMAL PRECISION ARE: X=±1 (±0.039), XX=±0.5 (±0.020), XXX=±0.25 (±0.010), XXXX=±0.127 (±0.005). LEAD SIZE=±0.05 (±0.002), LEAD LENGTH=±0.75 (±0.030). MIN.= +DECIMAL PRECISION -0.00 MAX.= +0.00 -DECIMAL PRECISION

REV. D PART NUMBER LCM-H501A50TR-1ASM

**CONFIDENTIAL INFORMATION**  
THE INFORMATION CONTAINED IN THIS DOCUMENT IS THE PROPERTY OF LUMEX INC. EXCEPT AS SPECIFICALLY AUTHORIZED IN WRITING BY LUMEX INC., THE HOLDER OF THIS DOCUMENT SHALL KEEP ALL INFORMATION CONTAINED HEREIN CONFIDENTIAL AND SHALL PROTECT SAME IN WHOLE OR IN PART FROM DISCLOSURE AND DISSEMINATION TO ALL THIRD PARTIES.



290 E. HELEN ROAD  
PALATINE, IL 60067-6976  
PHONE: +1.847.359.2790  
US WEB: www.lumex.com  
TW WEB: www.lumex.com.tw

5 DIGIT CUSTOM LCD MODULE ASSEMBLY.

**RELIABILITY NOTE**  
OUR MANY YEARS OF EXPERIENCE, DATA ACCUMULATION INDICATE THAT SOLDER HEAT IS A MAJOR CAUSE OF EARLY AND FUTURE FAILURE. PLEASE PAY ATTENTION TO YOUR SOLDERING PROCESS.

DRAWN BY: JC CHECKED BY: APPROVED BY: DATE: 9.24.01  
PAGE: 1 OF 2  
SCALE: N/A

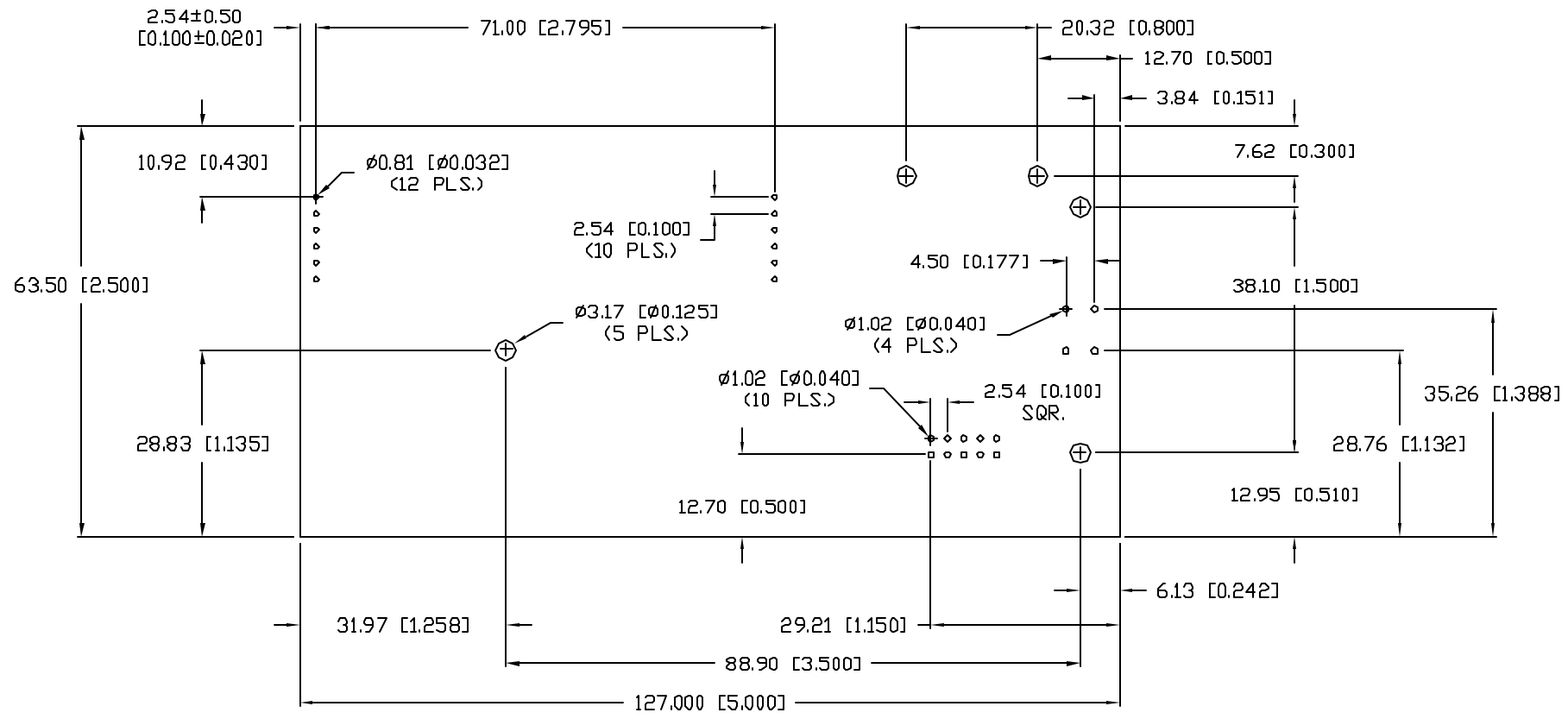
UNCONTROLLED DOCUMENT

NOTES:

1. FOR DETAIL PCB LAYOUT, PLEASE VIEW GERBER FILES.

TOP VIEW DRILLED PCB LAYOUT, COMPONENTS NOT INSTALLED.

PART NUMBER		REV.
LCM-H501A50TR-1ASM		D
REV.	E.C.N. NUMBER AND REVISION COMMENTS	DATE
A	SEE PAGE #1	



A

UNCONTROLLED DOCUMENT

\*UNLESS OTHERWISE SPECIFIED TOLERANCES PER DECIMAL PRECISION ARE: X=±1 (±0.039), XX=±0.5 (±0.020), XXX=±0.25 (±0.010), XXXX=±0.127 (±0.005). LEAD SIZE=±0.05 (±0.002), LEAD LENGTH=±0.75 (±0.030). MIN.= +DECIMAL PRECISION -0.00 MAX.= +0.00 -DECIMAL PRECISION

REV.	PART NUMBER	<p><b>CONFIDENTIAL INFORMATION</b></p> <p>THE INFORMATION CONTAINED IN THIS DOCUMENT IS THE PROPERTY OF LUMEX INC. EXCEPT AS SPECIFICALLY AUTHORIZED IN WRITING BY LUMEX INC., THE HOLDER OF THIS DOCUMENT SHALL KEEP ALL INFORMATION CONTAINED HEREIN CONFIDENTIAL AND SHALL PROTECT SAME IN WHOLE OR IN PART FROM DISCLOSURE AND DISSEMINATION TO ALL THIRD PARTIES.</p> <p><b>RELIABILITY NOTE</b></p> <p>OUR MANY YEARS OF EXPERIENCE DATA ACCUMULATION INDICATE THAT SOLDER HEAT IS A MAJOR CAUSE OF EARLY AND FUTURE FAILURE. PLEASE PAY ATTENTION TO YOUR SOLDERING PROCESS.</p>	<p>290 E. HELEN ROAD PALATINE, IL 60067-6976 PHONE: +1.847.359.2790 US WEB: www.lumex.com TW WEB: www.lumex.com.tw</p>
D	LCM-H501A50TR-1ASM		
5 DIGIT CUSTOM LCD MODULE ASSEMBLY.		<p>DRAWN BY: jc</p>	<p>CHECKED BY:</p>
		<p>APPROVED BY:</p>	<p>DATE: 9.24.01 PAGE: 2 OF 2 SCALE: N/A</p>