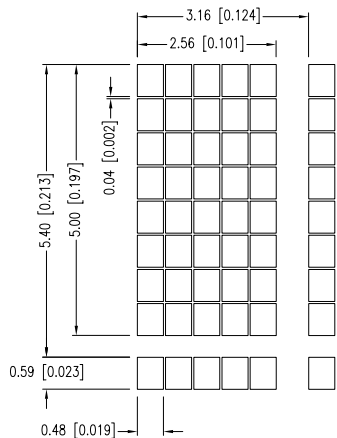
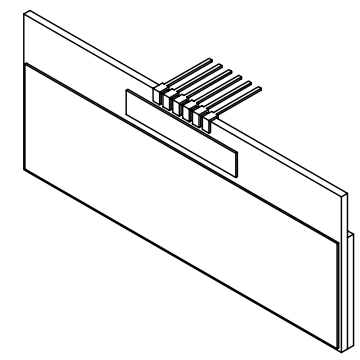
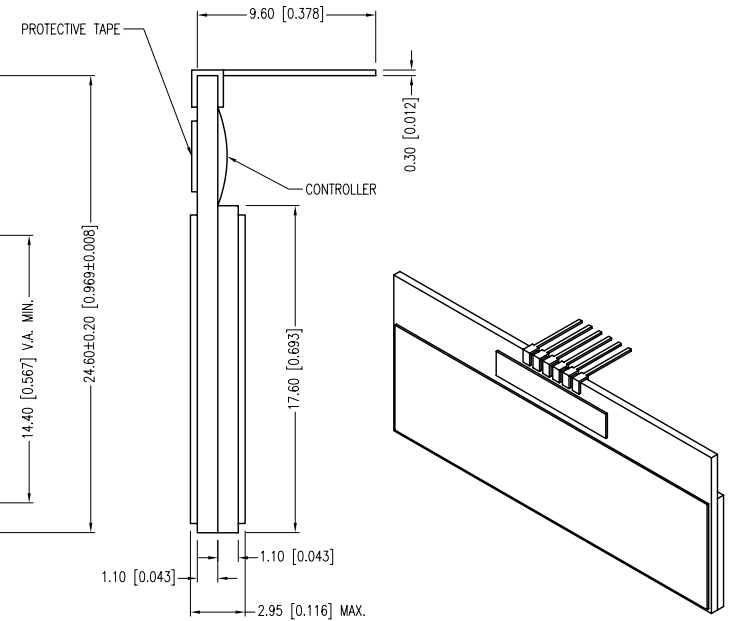
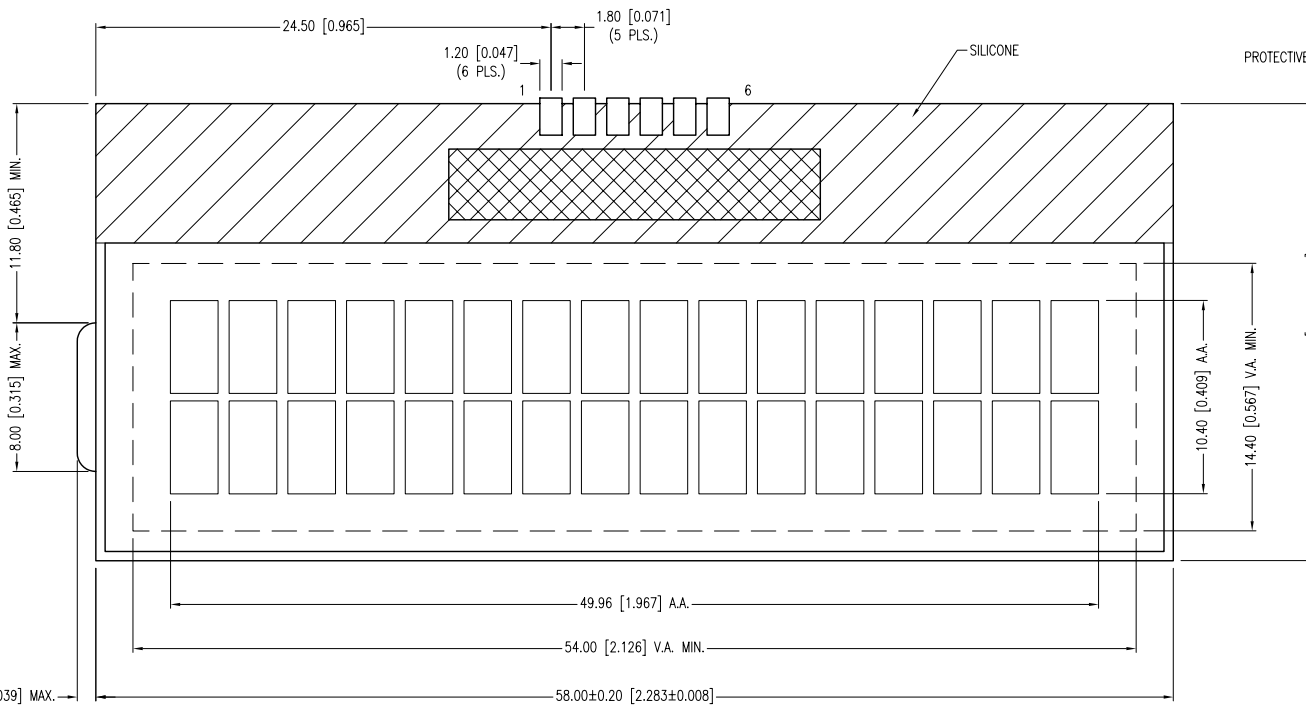
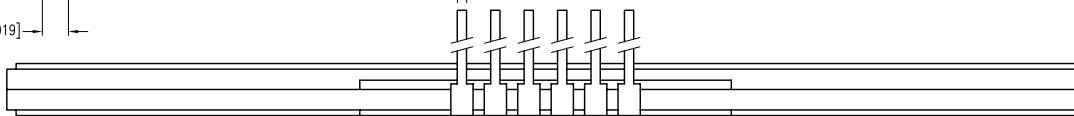


CHARACTER DETAIL



CAUTION: STATIC SENSITIVE DEVICE
FOLLOW PROPER E.S.D. HANDLING PROCEDURES
WHEN WORKING WITH THIS PART.

0.50 [0.020]
(6 PLS.)



*UNLESS OTHERWISE SPECIFIED TOLERANCES PER DECIMAL PRECISION ARE: X=±1 (±0.039), X.X=±0.5 (±0.020), X.XX=±0.25 (±0.010), X.XXX=±0.127 (±0.005). LEAD SIZE=±0.05 (±0.002), LEAD LENGTH=±0.75 (±0.030). MIN.= +DECIMAL PRECISION MAX.= +0.00 -DECIMAL PRECISION



290 E. HELEN ROAD
PALATINE, IL 60067-6976
PHONE: +1.847.359.2790
FAX: +1.847.359.6538
WEB: WWW.LUMEX.COM
MEMBER OF ITW PHOTONICS GROUP

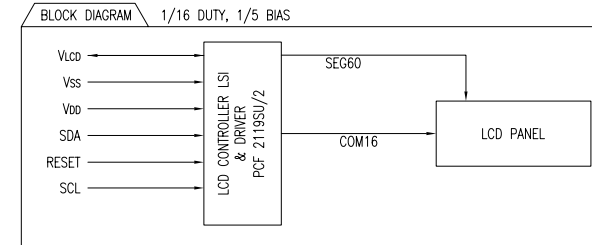
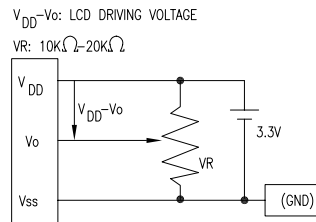
16x2 LCD MODULE 5mm CHAR HEIGHT, 5x8 DOT MATRIX, STN YELLOW, TRANSLLECTIVE, IIC ADDRESS SERIAL.

THE SPECIFICATIONS MAY CHANGE AT ANY TIME WITHOUT NOTICE DUE TO NEW MATERIALS OR PRODUCT IMPROVEMENT.

CONFIDENTIAL INFORMATION
THE INFORMATION CONTAINED IN THIS DOCUMENT IS THE PROPERTY OF LUMEX INC. EXCEPT AS SPECIFICALLY AUTHORIZED IN WRITING BY LUMEX INC., THE HOLDER OF THIS DOCUMENT SHALL KEEP ALL INFORMATION CONTAINED HEREIN CONFIDENTIAL AND SHALL PROTECT SAME IN WHOLE OR IN PART FROM DISCLOSURE AND DISSEMINATION TO ALL THIRD PARTIES.

DATE: 04.24.12	DRAWN BY: AB
PAGE: 1 OF 2	CHKD BY: DT
SCALE: NTS	APRVD BY: DT
UNIT: mm [INCH]	Ⓟ

PIN CONFIGURATION			
PIN NO.	SYMBOL	LEVEL	FUNCTION
1	SCL	H/L	IIC SERIAL CLOCK INPUT
2	RESET	H	RESET INPUT
3	SDA	H/L	IIC BUS SERIAL DATA I/O
4	V _{DD}	3.0V	POWER SUPPLY VOLTAGE
5	V _{SS}	0V	POWER SUPPLY GROUND
6	V _{LCD}	H	LCD DRIVER SUPPLY VOLTAGE



ELECTRICAL CHARACTERISTICS V_{DD}=2.7V to 4.5V, T_a=25°C

ITEM	SYMBOL	CONDITION	STANDARD VALUE			UNIT	
			MIN	TYP	MAX		
SUPPLY VOLTAGE FOR LOGIC	V _{DD} -V _{SS}	-	2.4	3.0	3.6	V	
SUPPLY CURRENT FOR LOGIC	I _{DD}	V _{DD} =3V	-	0.7	1.0	mA	
INPUT VOLTAGE	HIGH	V _{IH}	H LEVEL	0.8 V _{DD}	-	V _{DD}	V
	LOW	V _{IL}	L LEVEL	V _{SS}	-	0.2V _{DD}	V
LCD MODULE DRIVING VOLTAGE	V _{DD} -V _o	T _a =25°C	4.0	4.4	5.0	V	

ABSOLUTE MAXIMUM RATINGS

ITEM	SYMBOL	TEST CONDITION	STANDARD VALUE		UNIT
			MIN	MAX	
SUPPLY VOLTAGE FOR LOGIC	V _{DD} -V _{SS}	T _a =25°C	-0.5	6.5	V
SUPPLY VOLTAGE FOR LCD DRIVE	V _{DD} -V _o	T _a =25°C	-0.5	7.5	V
INPUT VOLTAGE	V _I	T _a =25°C	-0.5	V _{DD} +0.5	V
OPERATING TEMPERATURE	T _{opr}	LCM-H	0	50	°C
STORAGE TEMPERATURE	T _{stg}	LCM-H	-20	70	°C

*UNLESS OTHERWISE SPECIFIED TOLERANCES PER DECIMAL PRECISION ARE: X=±1 (±0.039), X.X=±0.5 (±0.020), X.XX=±0.25 (±0.010), X.XXX=±0.127 (±0.005). LEAD SIZE=±0.05 (±0.002), LEAD LENGTH=±0.75 (±0.030). MIN.= +^{DECIMAL PRECISION} -0.00, MAX.= +^{DECIMAL PRECISION} -0.00

290 E. HELEN ROAD
 PALATINE, IL 60067-6976
 PHONE: +1.847.359.2790
 FAX: +1.847.359.6538
 WEB: WWW.LUMEX.COM
 MEMBER OF ITW PHOTONICS GROUP

16x2 LCD MODULE 5mm CHAR HEIGHT, 5x8 DOT MATRIX, STN YELLOW, TRANSLLECTIVE, IIC ADDRESS SERIAL.

THE SPECIFICATIONS MAY CHANGE AT ANY TIME WITHOUT NOTICE DUE TO NEW MATERIALS OR PRODUCT IMPROVEMENT.

CONFIDENTIAL INFORMATION
 THE INFORMATION CONTAINED IN THIS DOCUMENT IS THE PROPERTY OF LUMEX INC. EXCEPT AS SPECIFICALLY AUTHORIZED IN WRITING BY LUMEX INC., THE HOLDER OF THIS DOCUMENT SHALL KEEP ALL INFORMATION CONTAINED HEREIN CONFIDENTIAL AND SHALL PROTECT SAME IN WHOLE OR IN PART FROM DISCLOSURE AND DISSEMINATION TO ALL THIRD PARTIES.

DATE:	04.24.12	DRAWN BY:	AB
PAGE:	2 OF 2	CHKD BY:	DT
SCALE:	NTS	APRVD BY:	DT
UNIT:	mm [INCH]		Ⓟ