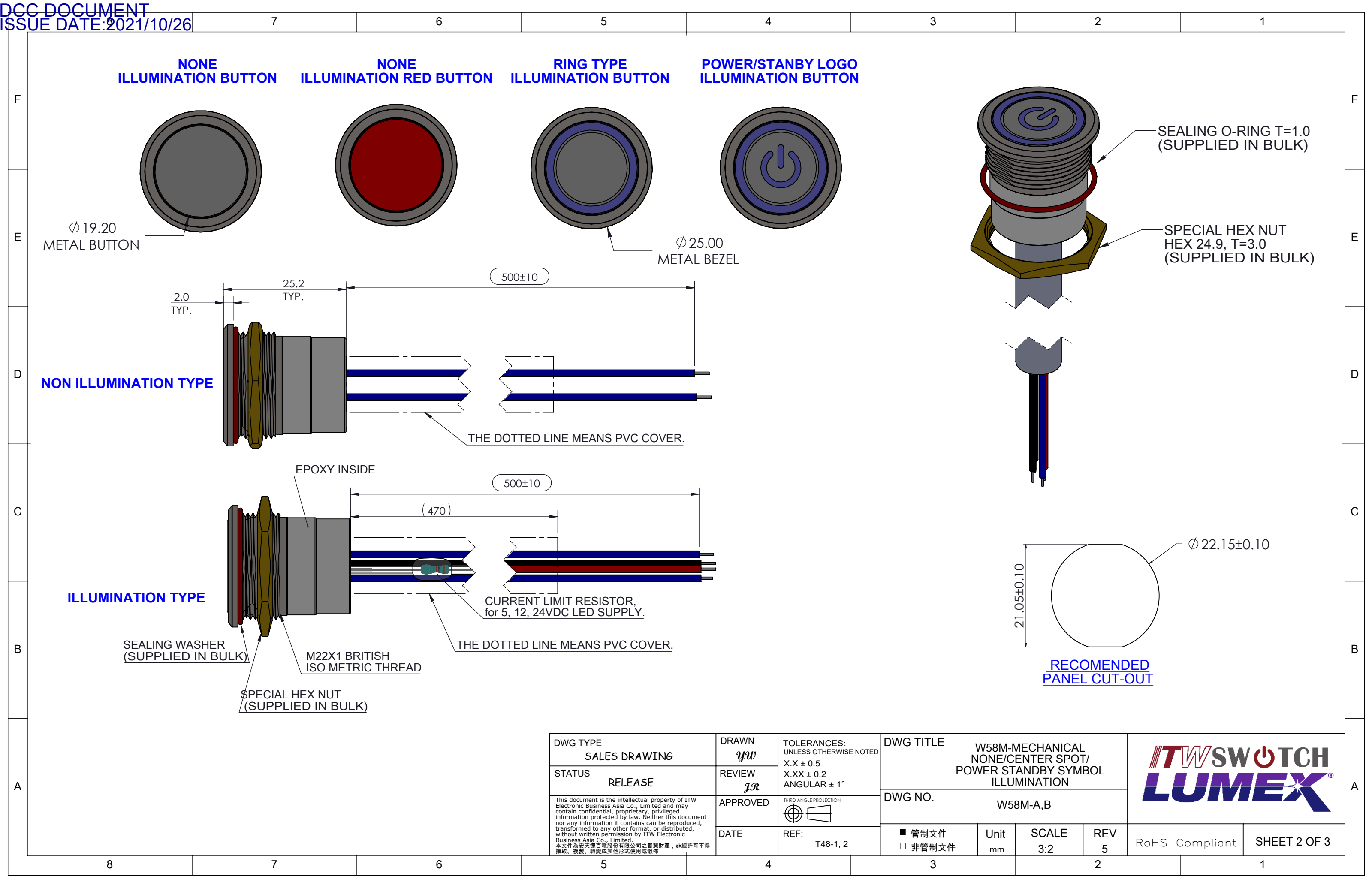


[illegible]



DCG DOCUMENT ISSUE DATE:2021/10/26										7	6	5	4	3	2	1			
F										F									
E										E									
D										D									
C										C									
B										B									
A										A									
8										7	6	5	4	3	2	1			

W58M—

①

②

③

④

⑤

SWITCH FUNCTION CODE	SWITCH FUNCTION DESCRIPTION
C	SOLID STATE,MOMENTARY,WIRELEADS
D	SOLID STATE,MAINTAINED,WIRELEADS

HOUSING MATERIAL CODE	HOUSING DECSRIPTION
1	STAINLESS STEEL
2	ALUMINUM, INHERENT

ILLU. TYPE CODE	ILLUMINATION TYPE DESCRIPTION
0	NON.-ILLUMINATION
2	RING ILLUMINATION
3	POWER/STANDBY SYMBOL ILLUMINATION
R	RED BUTTON, NON-ILLUMINATION

LED COLOR CODE	LED COLOR
N	NONE
G	GREEN
R	RED
B	BLUE
W	WHITE
Y	YELLOW
RB	RED/BLUE DUAL
RG	RED/GREEN DUAL
BG	BLUE/GREEN DUAL

LED INLET VOLTAGE CODE	LED INLET VOLTAGE
IF BLANK*	(SEE NOTE )
05	5V
12	12V
24	24V

MECHANICAL CHARACTERISTICS:  
SWITCH CIRCUITRY: SPST-NO  
SWITCH ACTION: MOMENTARY AND MAINTAINED  
BUTTON TRAVEL (NOMINAL): 2.3mm [.090 in]  
OPERATING FORCE (NOMINAL): 306g [3N]  
PANEL THICKNESS: 0.5 - 4.5mm[.020 - .177 in]  
NUT TORQUE FORCE: MAX 11.5 kgf/cm[10 LB/in ]

SWITCH LIFE:  
MOMENTARY: 1,000,000 CYCLES (NOMINAL)  
MAINTAINED: 50,000 CYCLES (NOMINAL)

ENVIRONMENTAL SPECIFICATIONS:  
ACTUATOR INGRESS PROTECTION: IP67  
OPERATING TEMPERATURE:  
NON-ILLUMINATION TYPE: -40 °C to +85 °C [-40 °F to +185 °F]  
ILLUMINATION TYPE: -25 °C to +85 °C [-13 °F to +185 °F]

ELECTRICAL SPECIFICATIONS:  
SUPPLY VOLTAGE: 4.2V to 24V, 26.5 MAX  
SUPPLY CURRENT:  
B>Brp, Vcc=12V: 3mA TYP to 8mA MAX  
B>Bop, Vcc=12V: 4mA TYP to 8mA MAX  
OUTPUT LOAD: SINKING (I out MAX = 25mA)  
REVERSE BATTERY VOLTAGE: -30V MAX  
REVERSE BATTERY CURRENT: -50mA MAX  
SWITCH LIFE:  
MOMENTARY: 1,000,000 CYCLES  
MAINTAINED: 50,000 CYCLES

LED SPECIFICATIONS:  
SEE LED SPECIFICATION(PAGE 1)

WIRELEADS SPECIFICATION:  
1. WIRELEADS USED BY AWG26/UL1007  
2. SWITCH WIRELEADS:(I)BLUE,(O) WHITE, (G)GREEN

NOTE:  
1. CURRENT LIMITING RESISTOR IS REQUIRED TO LIMIT LED FORWARD CURRENT TO 20mA  
2. SUPPLY HEX NUT AND SEALING WASHER BULK PACKED

HALL EFFECT DEVICE

IN PUT

OUT PUT

.01mf

SUGGESTED CIRCUITRY

LED SPECIFICATION					
LED CODE	LED SINGLE COLOR	Vf(VDC)	If (mA)	CIRCUITRY	
		TYP.			
R	RED	2.2	20	<div><div>RED WIRELEADS</div><div></div><div>BLACK WIRELEADS</div></div>	
Y	YELLOW	2.2	20		
G	GREEN	3.2	20		
B	BLUE	3.2	20		
W	WHITE	3.2	20		
LED CODE	BICOLOR LED		Vf(VDC)	If (mA)	CIRCUITRY
	COLOR1	COLOR2	TYP.		
RB	RED	BLUE	2 (RED) 3.2 (BLUE)	20	<div><div>COLOR 1</div><div>RED WIRELEADS</div><div></div><div>BLACK WIRELEADS</div><div>COLOR 2</div><div>YELLOW WIRELEADS</div><div></div><div>BROWN WIRELEADS</div></div>
RG	RED	GREEN	2 (RED) 3.2 (GREEN)	20	
BG	BLUE	GREEN	3.4 (BLUE) 3.2(GREEN)	20	

Notes:  
Hand Soldering Temperature (4mmabove from Body) : 320°C for 3 seconds

DWG TYPE	DRAWN	TOLERANCES: UNLESS OTHERWISE NOTED X.X ± 0.5 X.XX ± 0.2 ANGULAR ± 1°	DWG TITLE				<div><div>ITW SWITCH</div><div>LUMEX®</div></div>		
SALES DRAWING	y.w.		W58M- PUSHBUTTON, SOLID STATE, WIRELEADS 500mm						
STATUS	REVIEW	REVIEW	DWG NO.						
RELEASE	j.w.	APPROVED	THIRD ANGLE PROJECTION	W58M-C & 58M-D				RoHS Compliant	SHEET 1 OF 3
This document is the intellectual property of ITW Electronic Business Asia Co., Limited and may contain confidential, proprietary, privileged information protected by law. Neither this document nor any information it contains can be reproduced, transformed to any other format, or distributed, without written permission by ITW Electronic Business Asia Co., Limited. 本文件為安捷爾電器股份有限公司之智慧財產，非經許可不得擷取、複製、轉變成其他形式使用或散佈		DATE	REF:	管制文件 非管制文件	Unit	SCALE	REV		
		2008/7/1	58M-A & 58M-B		mm	3:2	4		

